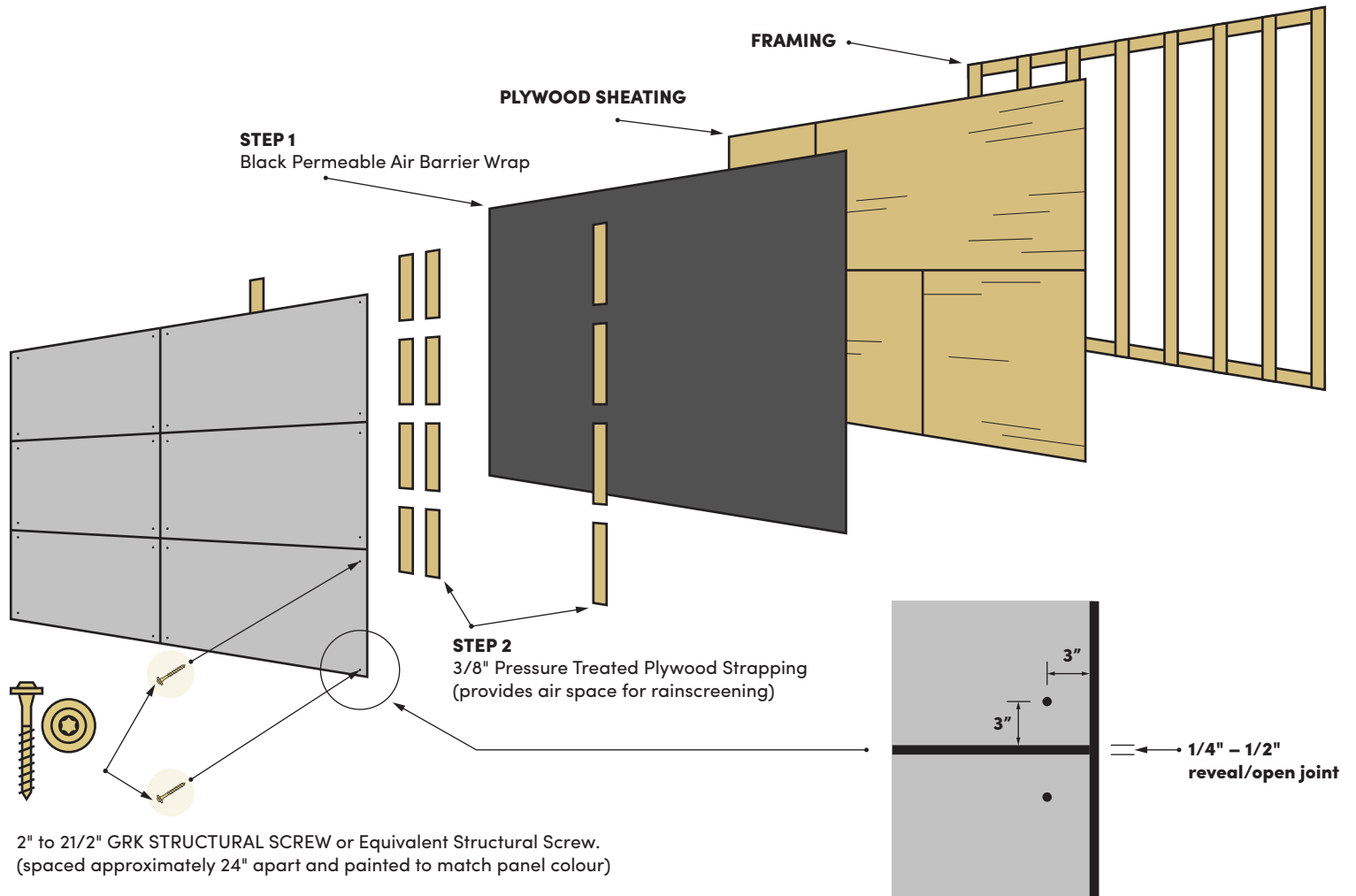




# EXTERIOR GFRC PANEL INSTALL GUIDE



## INSTALLATION STEPS

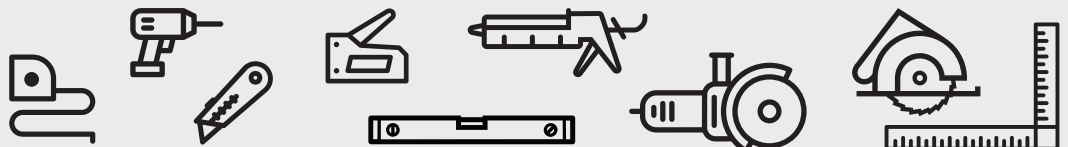
1. Apply a vapour permeable air barrier wrap starting from the bottom of the walls, overlapping each layer. (recommend an SRP Canada Inc. product – Air Outshield or equivalent) [www.srpcanada.ca](http://www.srpcanada.ca)
2. Plan your panel layout, consider full panel size while paying attention to the desired open joint/reveal width between each panel.
3. Attach 3/8" spacers, 3" on centre from corners and 24" on centre from each other.
4. Predrill holes in panel with a bit 1/6" larger than the diameter of the screw being used, 3" from the edges and approx 24" from each other.
5. Place first panel with 2 screws adjusting until level. Then install remaining screws.
6. Repeat steps 3–5 maintaining your desired open joint/reveal width. Cut pieces to fit with a grinder or skill saw, using a continuous diamond blade.

**NOTE:** Do not place skill saw directly onto the panel without using a covering guide.  
Metal guide of the skill saw will mark the panel.

**For a smooth & timely Installation, please ensure the following criteria are met prior to arriving on site.**

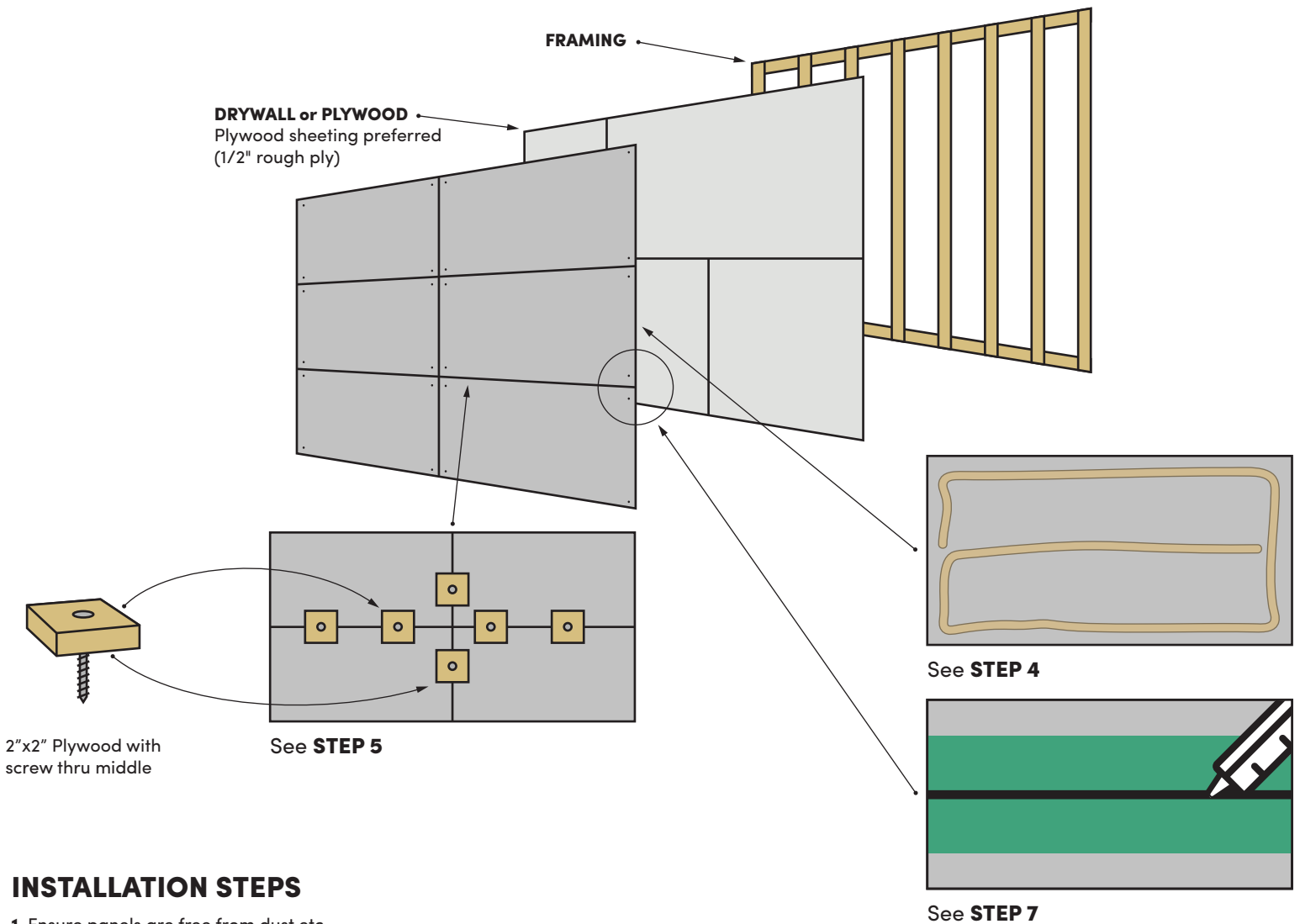
- Prepare Existing framing and sheathing. Level and plumb, tolerance within 1/8" over 8'.
- Clean Jobsite. Remove all obstructions and foreign debris.
- Access to Water, power, parking, and a lavatory.
- Panels **MUST** be carried vertical when being moved.

## TOOLS REQUIRED





# INTERIOR GFRC PANEL INSTALL GUIDE



## INSTALLATION STEPS

1. Ensure panels are free from dust etc.
2. Plan your panel layout, considering full panel size & paying attention to recommended 1/8" space between each panel.
3. Place a 1/8" diameter screw through the centre of a 2"x2" piece of plywood.
4. Apply a generous amount of PL FAST GRAB or M1 Silicone Construction Adhesive Chem Link to the back of the panel.
5. Place the first panel with 2 screws – adjusting until level, then install more screws and blocks as needed.
6. Repeat steps 3–5 maintaining a 1/8" space between panels. Cut pieces to fit with a grinder or skill saw using a diamond blade.
7. Tape each panel at the joint using painters masking tape at the joints (see reference Step 7). Insert colour matched silicone. Recommend Mapesil-T by Mapei or equivalent.

**NOTE:** Do not place skill saw directly onto the panel without using a covering guide. Metal guide of the skill saw will mark the panel.

**For a smooth & timely installation, please ensure the following criteria are met prior to arriving on site.**

- Prepare Existing framing and sheathing. Level and plumb, tolerance within 1/8" over 8'.
- Clean Jobsite. Remove all obstructions and foreign debris.
- Access to Water, power, parking, and a lavatory.
- Panels **MUST** be carried vertical when being moved.

## TOOLS REQUIRED

